



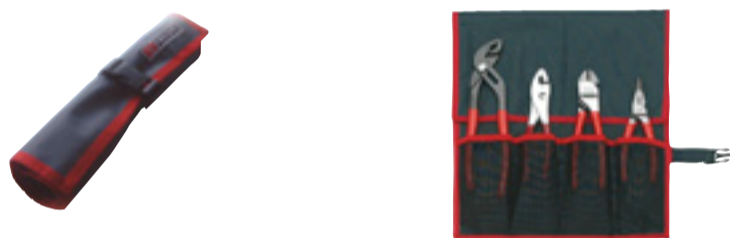
3. Toolboxes, cases and chests

▶ Tool boxes 104



Tool boxes.....	104
Metal toolboxes.....	105
Plastic toolboxes.....	107
Organizers.....	109

▶ "Light maintenance" kits 110



▶ Plastic cases 110



▶ Service cases 111



Electrical service cases.....	112
Universal cases.....	113
Roller cases.....	115

▶ Leather cases 116



▶ Leather bags 117



▶ "Light maintenance" soft cases 118



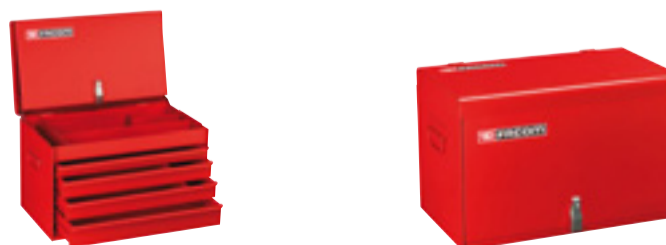
▶ Chests for roller cabinets 119



▶ Maintenance chests 121



▶ "Construction" chests 123



NEW

Facom Pro Box



The professional answer

Advantages

- ▶ Sturdy
- ▶ Kind to the working environment
- ▶ Lockable



N ▶ 107

NEW

Organisers



Ideal for on-site maintenance

Advantages

- ▶ Large capacity
- ▶ Modular design
- ▶ Safe



N ▶ 109

The new generation toolbox



Advantages

- ▶ Sturdy design
- ▶ Safe and comfortable
- ▶ Many compartments



N ▶ 104

New**FABRIC TOOL BOX
BS.T20****FACOM PROBAG****Heavy duty design :**

- Very high strength 1,200 x 1,200 denier fabric.
- Rigid, waterproof tool compartment.
- Aluminium handle.

Protection and comfort :

- Leather grip.
- Padded shoulder strap.
- Closing flap.

Handy storage :

- Elastic tool retaining strap.
- Special screwdriver partition.
- Easy access to the tool compartment.
- Large number of side pockets.
- Adjustable saw compartment with self-adhesive strips.
- Flap top storage pouch.



New

Fabric tool box

BS.T20

- Dimensions : 49 x 22 x 35 cm.
- $\Delta\Delta$: 2.797 kg.



► Metal tool boxes



"Traditional" metal tool boxes

INSTANT ACCESS TO COMPARTMENTS

STURDY

- 1) Heavy-duty hinges and anodized pins.
- 2) Stiffened lid Fully riveted.

PRACTICAL

- 3) Storage modules available.
- 4) Padlock clasp.

ERGONOMIC

- 5) Ergonomic handle
- 6) Edges carefully deburred for safety.



Five-tray box

BT.13A

- Large storage capacity.
- Can hold a hacksaw or spirit level.
- Handles pull apart for immediate access to all trays.
- Foam-lined compartment bottoms.
- Padlock clasp (padlock not supplied).
- Bottom bin : 518 x 200 x 98 mm.
- Trays : 526 x 100 x 55 mm.
- Capacity : 30 kg.
- Volume : 18 dm³.
- Dimensions : 560 x 220 x 238 mm.
- $\Delta\Delta$: 5 kg.



Five-tray box

BT.11A

- Large storage capacity
- Handles pull apart for immediate access to all trays.
- Foam-lined compartment bottoms.
- Padlock clasp (padlock not supplied).
- Bottom bin : 448 x 200 x 98 mm.
- Trays : 448 x 100 x 55 mm.
- Capacity : 25 kg.
- Volume : 17 dm³.
- Dimensions : 475 x 220 x 238 mm.
- $\Delta\Delta$: 4.5 kg.



Three-tray box

BT.9

- Good size-to-capacity ratio
- Handles pull apart for immediate access to all trays.
- Foam-lined compartment bottoms.
- Padlock clasp (padlock not supplied).
- Bottom bin : 448 x 205 x 98 mm.
- Trays : 448 x 100 x 55 mm.
- Capacity : 20 kg.
- Volume : 13 dm³.
- Dimensions :
- 475 x 220 x 185 mm.
- $\Delta\Delta$: 3.4 kg.

	Dimensions mm	Description	$\Delta\Delta$ g
P.10A	444 x 95 x 30	Five-compartment tray	120
PL.249	435 x 89 x 44	Socket tray	150



Tool box trolley

BT.A2

- Platform to take boxes and chests : BT.9-BT.11A-BT.13A.
- Box is secured but may be removed when necessary.
- Fold-down handle for easy storage.
- Wheels \varnothing 98 mm for effortless travel.
- Max. load : 30 kg.
- Dimensions : 600/920 x 210 x 400 mm.
- $\Delta\Delta$: 4.25 kg.



Two-tray box

BT.6A

- Bottom bin and hinged top tray.
- Lid opening offsets top tray to give immediate access to bottom bin.
- Foam-lined compartment bottoms.
- Padlock clasp (padlock not supplied).
- Carrying handle, contoured edges and identity tag recess.
- Bottom bin : 440 x 170 x 85 mm.
- Top tray : 440 x 170 x 50 mm.
- Capacity : 15 kg.
- Volume : 10 dm³.
- Dimensions : 467 x 185 x 155 mm.
- $\Delta\Delta$: 3 kg.



"Compact" tool box

BT.4A

- Steel box containing a tool tray with central partition, comfortable handle.
- Bottom bin : 290 x 155 x 45 mm.
- Tray compartments 260 x 80 x 30 mm (x 2).
- Dimensions : 295 x 207 x 95 mm.
- $\Delta\Delta$: 1.8 kg.



► Plastic tool boxes

New

FACOM PRO BOX

THE PROFESSIONAL ANSWER

Sturdy

- Reinforced polypropylene shell.
 - Impact resistant.
 - Resistant to common chemical agents.
- Metal hinges and fasteners.
 - Very durable.
- Safe, comfortable aluminium handle.

Safe

- Flexible protective corner bumpers.
- Metal padlock clasps (padlock not included).

Easy tool use

- Portable tool tray.
- Securing straps in the lid (BP.P26 only).



New

51 cm box

BP.P20

- 51 cm, approx 36 dm.³.
- Dimensions : 50.2 x 26.8 x 27.3 cm.
- ΔΔ : 2.32 kg.



66 cm box

BP.P26

- 66 cm, approx 47 dm.³.
- Dimensions : 65 x 26.8 x 27.3 cm.
- ΔΔ : 2.94 kg.



41 cm box**BP.C16**

- 2 storage compartments on the lid.
- Strong metal catches.
- Padlock clasp (padlock not supplied).
- Retractable handle.
- Removable tray.
- Stackable.
- Dimensions : 41.1 x 19.9 x 18.5 cm (15 dm³).
- ΔΔ : 1.1 kg.

**49 cm box****BP.C19**

- 2 storage compartments on the lid.
- Strong, padlockable metal catches (padlock not supplied).
- Retractable handle.
- Removable tray.
- Stackable.
- Dimensions : 49.3 x 25.6 x 24.8 cm (31 dm³).
- ΔΔ : 1.95 kg.

**61 cm box****BP.C24**

- 2 storage compartments on the lid.
- Strong, padlockable metal catches (padlock not supplied).
- Retractable handle.
- Removable tray.
- Stackable.
- Dimensions : 61 x 27 x 28.4 cm (47 dm³).
- ΔΔ : 2.74 kg.



► Organizer

Eight-compartment organizer

BP.Z8

- Transparent lid for immediate recognition of contents.
- 8 removable, divisible compartments (up to 10 spaces).
- Polycarbonate lid.
- Lid secures the inner compartments ensuring that the parts remain in place during transport.
- Dimensions : 42.2 x 33.5 x 10.6 cm
- ΔΔ : 1.8 Kg.



Forty-six compartment organizer

BP.Z46

- Large capacity :
 - 36 litres.
 - 6 central drawers.
 - 2 side trays (up to 16 compartments per tray).
- Modularity :
 - Customisable storage trays for tools and consumables.
 - Tray separators providing up to 3 compartments per tray.
- Safety :
 - Safety catch preventing trays and drawers opening during transport.
- Dimensions : 45.4 x 24.4 x 32.4 cm.
- ΔΔ : 3.1 kg.

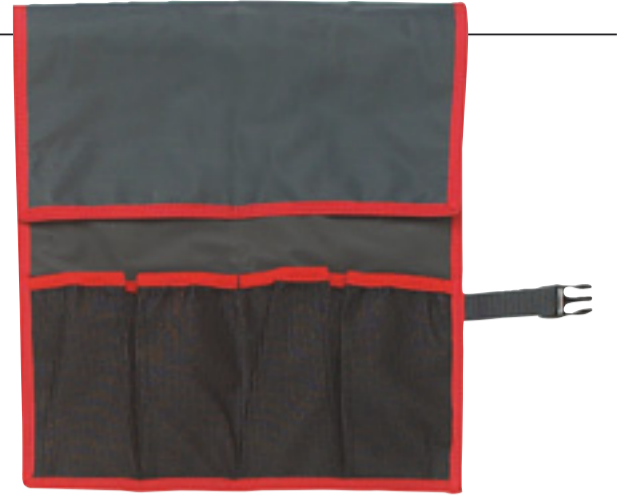


"Light maintenance"

Nylon tool roll bag

- Made of nylon.
- PVC pockets, available in small, medium and large sizes.
- Chemical and hydrocarbon-resistant.
- Practical : folds for transport.
- Secure : closed by clip-fastened strap.
- Ergonomic : spaces designed to suit tool sizes.

Ref	Dimensions mm	Number of pockets			Total no. of pockets
		Small	Medium- sized	Large	
N.38A-4B	310 x 530	-	-	4	4
N.38A-6F	360 x 520	3	-	3	6
N.38A-10C	320 x 735	3	1	6	10
N.38A-12C	330 x 800	5	-	7	12

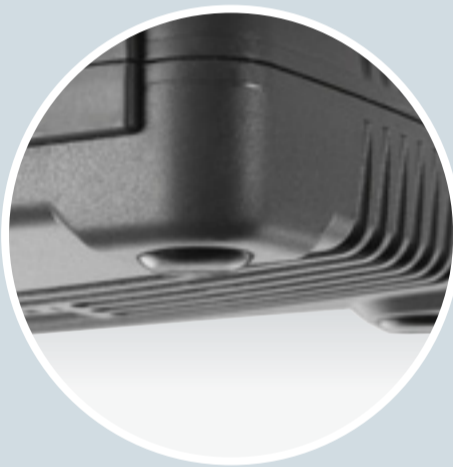


Plastic cases

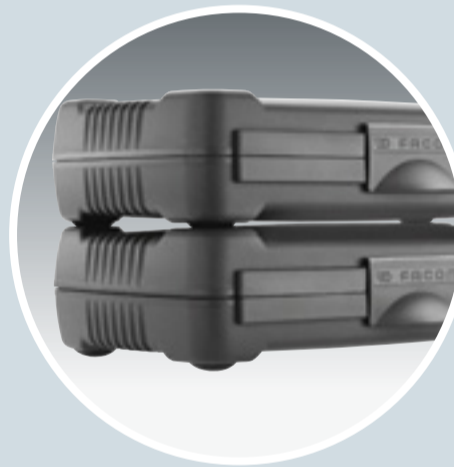


Plastic cases

FOR STORING TOOLS OR CONSUMABLES



Fitted with non-slip studs



Stackable



Scratch-resistant

These cases can fit into other Facom units :

- Cases, tool boxes, roller cabinets, work benches, tool bags.

BP Plastic cases

- Recyclable polypropylene.
- Chemical and hydrocarbon-resistant.
- High impact and drop resistance.
- Ultra-durable hinges and catches.
- Easily opened with one hand.
- Lightweight.

Ref	Dimensions mm	ΔΔ g
BP.102	204 x 122 x 52	172
BP.109	478 x 234 x 72	923
BP.112	389 x 164 x 66	452
BP.115	332 x 143 x 67	780





Selection guide







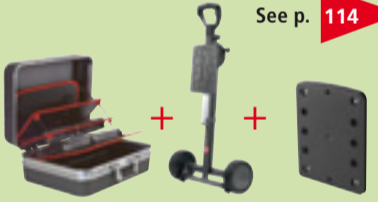




CHOOSING A CASE

Facom cases are of sturdy design for carrying heavy loads and are laid out in such a way as to optimise the available storage space. All cases are key-lockable for the safety of your tools.

- **Protect your back, reduce fatigue :**

Wheeled cases. The majority of Facom cases are compatible with the "Facom case trolley" or are fitted as standard with wheels.

- **A case to suit every need :**

	Hand-held	Workstation case (with adjustable trolley)	Roller cases
Standard	 See p. 112	 See p. 114	 See p. 115
	BV.21ST : clear bottom section BV.21SX : compartmented bottom section	BV.21ST + BV.C1 + BV.C1A1 BV.21SX + BV.C1 + BV.C1A1	BV.21TR1
Heavy-duty	 See p. 112	 See p. 114	---
	BV.51A : rack tool holders BV.51APR : pouch tool storage	BV.51A + BV.C1 + BV.C1A1 BV.51APR + BV.C1 + BV.C1A1	
Seal tight	 See p. 113	 See p. 114	---
	BV.29 : without connecting plate BV.29P : with plate BV.C1A1	BV.29 + BV.C1 + BV.C1A1 BV.29P + BV.C1 + BV.C1A1	
Large capacity	---	---	 See p. 115
			BV.61
Leather	 See p. 116	---	---
	BV.7A : "Large" BV.6A : "Medium" 640083 : "Small" BV.5A : with drawers		



► Electrical service cases

Technicians case

BV.51A

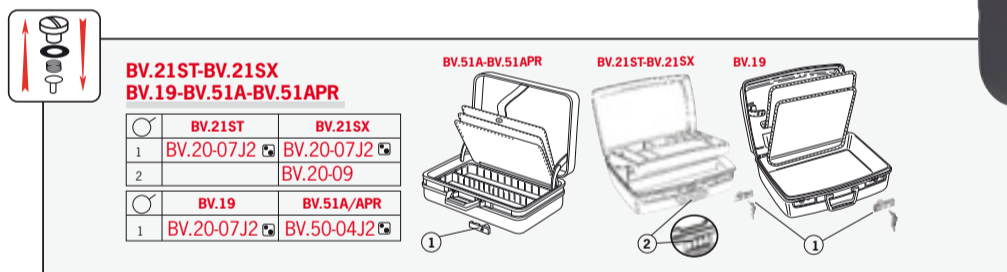
- Tool storage racks (8) with rubber holding straps on 4 surfaces.
 - 1 document holder in the lid.
 - 1 fully modular compartment with 5 removable partitions.
 - Lid can be locked open.
 - Numbered key lock (20 different lock numbers can be provided to special order).
 - Bi-material handle.
 - Impact-resistant polypropylene shell.
 - Non-slip rubber feet.
 - Sizes of the 5 partitions :
 - 1 partition 315 mm x 65 mm.
 - 2 partitions 185 mm x 65 mm.
 - 2 partitions 125 mm x 65 mm.
 - Size of the bottom compartment : L.435 x D.315 x H.65 mm.
 - Overall dimensions : L.486x D.430 x H.205 mm.
 - Internal dimensions : L.470x D.345 x H.190 mm.
- ΔΔ : 6.12 kg.



Technicians case

BV.51PR

- Similar to model BV.51A, but with additional internal storage panels.
 - Tool pockets on 4 sides.
- ΔΔ : 5.3 kg.



Fitters case

BV.21SX

- Shock-resistant polypropylene. Airline approved. Volume 28 dm³.
 - Compartmented bottom section.
 - Modular tool storage with sealed compartments.
 - 3 small component containers (BV.21BP).
 - Soldering iron stand (BV.21-10).
 - Numbered safety key locks (20 different lock numbers can be provided to special order).
 - Max. capacity : 25 kg.
 - Internal dimensions : 500 x 360 x 165 mm.
 - Overall dimensions : 530 x 390 x 180 mm.
- ΔΔ : 4.2 kg.



Icon	Dimensions mm	Description	ΔΔ g
○	180 x Ø 35	Soldering iron stand	200
○	165 x 110 x 28	Set of 3 plastic boxes	180
○	490 x 345 x 35	Foam compartment divider	200

Fitters case

BV.21ST

- Shock-resistant polypropylene. Airline approved. Volume 28 dm³.
- Modular tool storage with sealed compartments.
- Clear bottom section with no partitioning.
- Numbered safety key locks (20 different lock numbers can be provided to special order).
- Internal dimensions : 500 x 360 x 165 mm.
- Overall dimensions : 530 x 390 x 180 mm.
- ΔΔ : 4.1 kg.

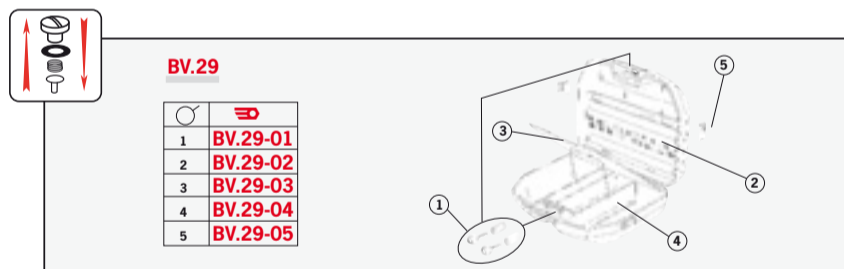


► Universal cases

Universal seal-tight case

BV.29

- Polypropylene copolymer outer shell with integral handle
- Side catches and seal for complete weather-tightness.
- Impact and hydrocarbon-resistant.
- High-security numbered locks (100 different lock numbers can be provided to special order).
- Two double-sided tool trays with elastic tool holders.
- Large compartmented bottom section.
- Volume : 29 dm³.
- Internal dimensions : 525 x 310 x 185.
- Overall dimensions : 570 x 415 x 200
- ΔΔ : 5 kg.



Universal seal-tight case with mounting plate

BV.29P

- General specification as BV.29, but with a plate (BV.C1A2) with a lock for securing to a wall, inside a vehicle or on a motorbike.
- ΔΔ : 5.3 kg.



Workstation trolley and service case holder

BV.C1

- Trolley only, compatible with case BV.29P or other case if fitted with plate BV.C1A1.
- Wheel, frame and multi-functional head assembly.
- Easy to use.
- Anti-tilt system.
- Case locks onto trolley.
- Max. capacity : 35 kg.
- Working height : 570 mm (+/- case).
- Folded length : 850 mm.
- Wheel base : 440 mm
- Wheel diameter : 150 mm.

$\Delta\Delta$: 4.5 kg.

	Description
BV.C1A1	Plate
BV.C1A2	Plate



Plate

BV.C1A1

- Universal plate fitting all cases, for attachment to trolley BV.C1.

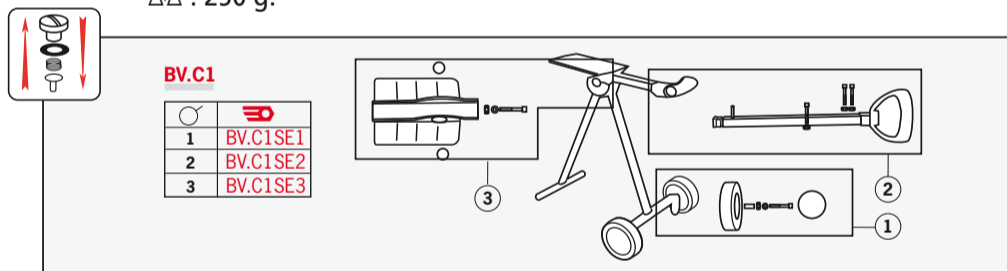


Plate

BV.C1A2

- Additional mounting plate for BV.29P providing additional attachment options (wall, motorbike, car).

$\Delta\Delta$: 250 g.



► Roller cases

Fitters roller container case

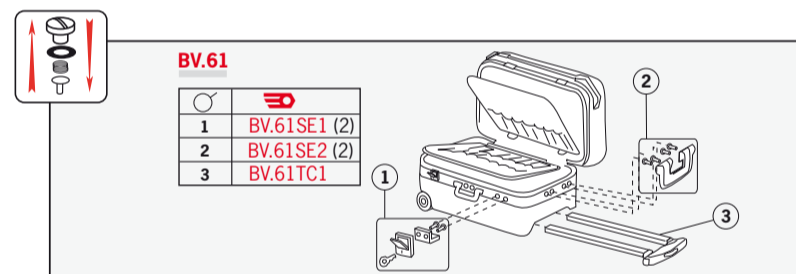
BV.61

- High Density Polyethylene (HDPE).
- Integral lockable folding trolley system
- 2 removable intermediate panels for optimum, tidy storage.
- Large volume bottom section for bulky items and/or spare parts.
- 2 handles providing 2 carrying options.
- Increased stability.
- 3 small component containers.
- Stiffeners.
- Large diameter wheels.
- Numbered safety key locks (20 different lock numbers can be provided to special order).
- Max. capacity : 30 kg.
- Length when open : 850 mm.
- Internal dimensions : 470 x 390 x 347 mm.
- Overall dimensions : 550 x 440 x 365.

ΔΔ : 8.5 kg.



Code	Description
BV.61BP	Set of 3 plastic boxes

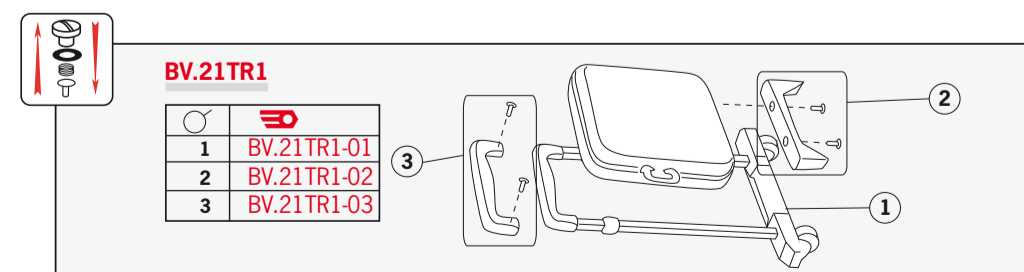


Fitters service roller case

BV.21TR1

- Lockable, folding steel trolley system.
- Modular tool storage with sealed compartments.
- Foam dividers for holding tools in place during transport and doubling as knee protection.
- 2 small component containers.
- Numbered safety key locks (20 different lock numbers can be provided to special order).
- Max. capacity : 25 kg.
- Internal dimensions : 500 x 360 x 165 mm.
- Overall dimensions : 530 x 390 x 180 mm, excluding trolley system.

ΔΔ : 5.2 kg.





Leather cases

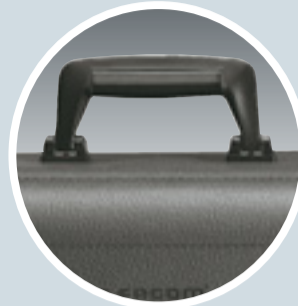
Strong leather and convenient plastics for long life and user comfort.



Quality finish.



Optimum storage.



Comfort.



Security.

Fold-down front case

BV.7A

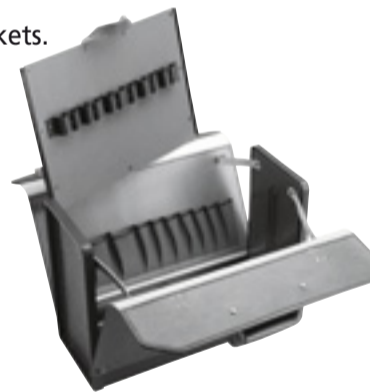
- Removable double-sided tilting panel 400 x 280 mm, comprising :
 - one side for tool storage and the other with a pocket for A4 documents and miscellaneous items.
 - back panel with 11-slot tool holder.
 - front flap with tool holder.
 - galvanized steel base.
- Stand-off feet.
- Dimensions : 445 x 330 x 185 mm.
- ΔΔ : 3.8 kg.



Dual access case

BV.6A

- Removable middle panel 400 x 280 mm. Slots on both sides will hold a total of 22 tools.
- Front and rear flaps opening to 45° with tool storage pockets.
- ABS base and sides.
- Dimensions : 430 x 350 x 195 mm.
- ΔΔ : 3.15 kg.



Drawer case

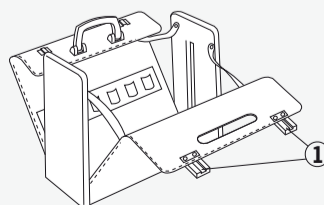
BV.5A

- Sliding drawers, one with 4 trays partitionable into 1 to 8 compartments, giving instant access to contents : 375 x 116 x 40 mm.
- Removable tray with handle.
- Tilting rear panel with 22-slot tool holder.
- Dimensions : 425 x 320 x 215 mm.
- ΔΔ : 4.6 kg.



BV.5A-BV.6A-BV.7A

1	BV.5-04 (2)
---	-------------



Case

640083

- Dimensions : 430 x 290 x 180 mm.
 - Rear panel with 11-slot tool holder.
 - Centre compartment for bulky items.
 - Front flap with 9-slot tool holder.
- ΔΔ : 2.6 kg.



Leather bags

Compact bag

BV.100

- Ideal for tools for on-site repairs to machinery.
 - Very strong and resistant to aggressive environments.
 - Dimensions : 350 x 120 x 120 mm.
- ΔΔ : 510 g.



Leather tool bag

703232

- Hide tool bag with shoulder strap.
 - Reinforced sides for increased stiffness.
 - Nickel-plated rivets.
 - Closed by 3 buckles.
 - Dimensions : 405 x 145 x 125 mm.
- ΔΔ : 880 g.



Plumbers bag

BV.105

- High strength, ideal for carrying bulky tools safely.
 - Wide adjustable shoulder-strap.
 - Fastened by buckles.
 - Reinforced base with protective studs.
 - Dimensions : 500 x 160 x 160 mm.
- ΔΔ : 1.3 kg.





Soft cases and back-packs

- ① Highly resistant materials.
- ② Practical storage.
- ③ Sturdy carrying straps.
- ④ Additional pockets.



Soft case

BV.16

- Resistant to hydrocarbons.
- Double-ended zip fastener can be secured by padlock (not supplied).
- A4 document holder.
- 29 tool slots and one compartment for a box or measuring instrument, 220 x 120 x 50 mm max.
- Load capacity : 10 kg.
- Stiff sides hold tools in position.
- Dimensions : 440 x 315 x 75 mm.
- ΔΔ : 920 g.



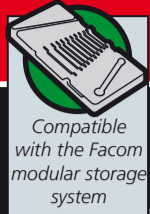
Back-pack

BV.17

- Sized for easy carrying, with adjustable waist and shoulder straps.
- Adjustable tool-retaining straps.
- 2 side pockets 220 x 110 x 40 mm.
- 1 zip-fastened back pocket 200 x 100 x 20 mm.
- 1 top pocket 190 x 100 x 35 mm.
- Strap for attaching ropes or long objects.
- Base designed for carrying a toolbox or bulky items.
- Padlock option (padlock not supplied).
- Load capacity : 20 kg.
- Dimensions : 530 x 450 x 220 mm.
- ΔΔ : 1.3 kg.



Chests for roller cabinets



Compatible with the Facom modular storage system

Drawer chests

See these products on p. 66

A WIDE RANGE OF APPLICATIONS



Compatible with roller cabinets



Stackable (BT.74TRA)



Roller-mounted (JET.CR4GXL)



Dedicated "construction" chest (BT.28)

JET.XL red four-drawer chest

JET.C4XL

- All the advantages of the JET.XL range.
- Drawer sizes :
 - 3 drawers 60 mm high.
 - 1 drawer 130 mm high.
- Overall dimensions (including worktop) : L.780xD.510xH.470 mm.
- Effective drawer dimensions : L.569xD.421xH.60/130.
- Drawer capacity : 20/25 kg.
- Compatible with the FACOM modular storage system.
- Able to receive removable drawer partitions (not included).
- Stackable on JET.XL. roller chest or cabinet (kit included).
- Red 3020.
- $\Delta\Delta$: 45.5 kg.



JET.XL grey four-drawer chest

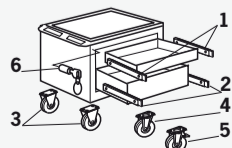
JET.C4GXL

- All the advantages of the JET.XL range.
- Drawer sizes :
 - 3 drawers 60 mm high.
 - 1 drawer 130 mm high.
- Overall dimensions (including worktop) : L.780xD.510xH.470 mm.
- Effective drawer dimensions : L.569xD.421xH.60/130.
- Drawer capacity : 20/25 kg.
- Compatible with the FACOM modular storage system.
- Able to receive removable drawer partitions (not included).
- Stackable on JET.XL. roller chest or cabinet (kit included).
- 9006 grey.
- $\Delta\Delta$: 45.5 kg.



JET.C4XL, JET.C4GXL

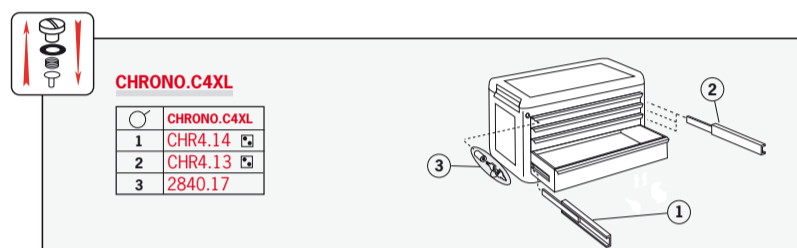
	FACOM		FACOM
1	JET2.13	4	2092.09
2	JET2.14	5	2092.10
3	2092.11	6	2840.17



CHRONO.XL four-drawer chest**CHRONO.C4XL**

- Same specification as the CHRONO.XL roller cabinet range.
- Drawer sizes :
 - 3 drawers 60 mm high.
 - 1 drawer 130 mm high.
- Overall dimensions (including worktop) : 735 x 510 x 480 mm.
- Effective drawer dimensions : L. 569 x D. 421 x H. 60/130.
- Drawer capacity : 20 kg.
- Compatible with the FACOM modular storage system.
- Able to receive removable drawer partitions (not included).
- Stackable on CHRONO.XL. roller cabinets with connection kit CHRONO.C4K1 (not included).
- Converts to a roller chest with wheel kit CHRONO.C4K2 (not included).
- Colour : RAL 3020 red cabinet and 9006 grey drawers.

ΔΔ : 41 kg.

**Connection kit****CHRONO.C4K1**

- For securely attaching the CHRONO.C4XL chest on top of a CHRONO.XL roller cabinet.

ΔΔ : 1.7 kg.

**Wheel kit****CHRONO.C4K2**

- For converting chests CHRONO.XL or JET.XL into roller chests.
- Comprising a set of wheels (2 fixed, 2 castors, one with a brake) and a handle.

ΔΔ : 5.4 kg.

**Maintenance chests****Wheel kit****BT.74K2**

- For converting BT.74 series chests to mobile units
- Wheels Ø 100 mm, 2 fixed and 2 castors, one with brake.
- Mounting screws supplied.

ΔΔ : 3 kg.

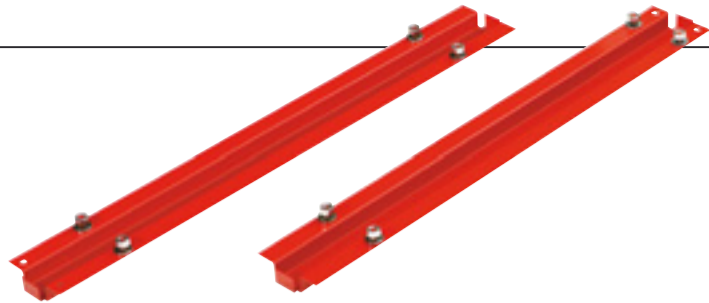


Maintenance chests

Stacking kit

BT.74K1

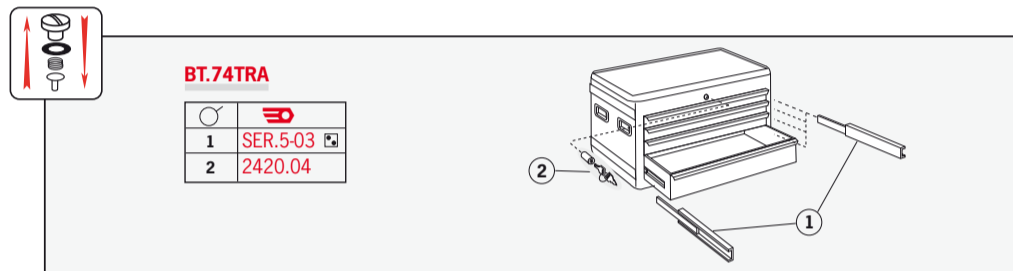
- For stacking and securing two BT.74TRA series chests
- ΔΔ : 1.48 kg.



Four-drawer chest

BT.74TRA

- ABS worktop.
 - 3 drawers 50 mm high.
 - 1 drawer 100 mm high.
 - Drawer dimensions : 534 x 358 mm.
 - 4 lifting handles on the sides of the chest.
 - Dimensions : 700 x 450 x 445 mm.
 - RAL 3020 red.
- ΔΔ : 30 kg.



Six-drawer chest

BT.66

- 1 drawer 110 mm high (x 297 x 534 mm).
 - 2 drawers 50 mm high (x 297 x 534 mm), 1 with partitions
 - 2 drawers 50 mm high (x 297 x 194 mm).
 - 1 drawer 50 mm high (x 297 x 82 mm).
 - 1 top compartment 45 mm high.
 - Lid closure locks drawers against opening.
 - Central key-locking.
- ΔΔ : 27 kg.



Four-drawer chest

BT.64

- 3 drawers 50 mm high (x 297 x 534 mm), 2 with partitions.
 - 1 drawer 110 mm high (x 297 x 534 mm).
 - 1 top compartment 45 mm high.
 - Lid closure locks drawers against opening.
 - Central key-locking.
- ΔΔ : 26 kg.



Three-drawer chest

BT.23L

- 3 drawers 50 mm high (475 x 185 mm).
- 1 top compartment 535 x 220 x 100 mm.
- Padlock clasp (padlock not supplied).
- Dimensions : 550 x 230 x 315 mm.
- ΔΔ : 12 kg.



Two-drawer chest

BT.22L

- 2 drawers 50 mm high (475 x 185 mm).
- 1 top compartment 535 x 220 x 100 mm.
- Padlock clasp (padlock not supplied).
- Dimensions : 550 x 230 x 254 mm.
- ΔΔ : 10 kg.



Two-drawer chest

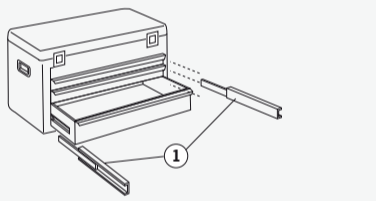
BT.22

- 2 drawers 50 mm high (404 x 185 mm).
- 1 top compartment 465 x 220 x 100 mm.
- Padlock clasp (padlock not supplied).
- Dimensions : 480 x 230 x 254 mm.
- ΔΔ : 8 kg.



BT.22-BT.22L-BT.23L

	BT.22	BT.22L	BT.23L
1	BT.22-03	BT.22-03	BT.22-03



Three-drawer chest

BT.63

- 3 drawers 50 mm high (x 297 x 534 mm), 2 with partitions.
- ABS-covered top.
- Central key-locking.
- ΔΔ : 16 kg.



Two-drawer chest

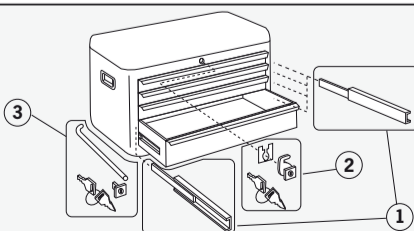
BT.62A

- 1 drawer 50 mm high (x 297 x 534 mm) with partitions.
- 1 drawer 110 mm high (x 297 x 534 mm).
- ABS-covered top.
- Central key-locking.
- ΔΔ : 15 kg.



BT.62-BT.63-BT.64-BT.66

	BT.62A	BT.63	BT.64	BT.66
1	BT.64-01	BT.64-01	BT.64-01	BT.64-01
2			BT.64-02	BT.64-02
3	BT.62-09	BT.62-09		



Maintenance chests

Cart

2701

- For BT.66 - BT.63 - BT.62 and BT.28.
- Wheels Ø 100 mm.
- Middle shelf for bulky tools.
- Dimensions : 804 x 670 x 427 mm.
- ΔΔ : 20 kg.



Chest trolley

2220A

- Can carry chests BT.63/64/66/28.
- Wheels Ø 100 mm, 2 fixed and 2 castors.
- Dimensions : 860 x 430 x 190 mm.
- ΔΔ : 12 kg.



"Construction" chests

"Construction" chests

BT.28

- Strong chest for carrying heavy tools.
- Capacity : 80 kg.
- Ideal for building-site vehicles.
- Side handles.
- Padlocking option.
- Comprising :
 - 1 drawer 38 mm high (x 537 x 314 mm)
 - 2 drawers 58 mm high (x 537 x 314 mm)
 - 1 drawer 78 mm high (x 537 x 314 mm).
- Dimensions : 615 x 385 x 392 mm.
- ΔΔ : 45 kg.

